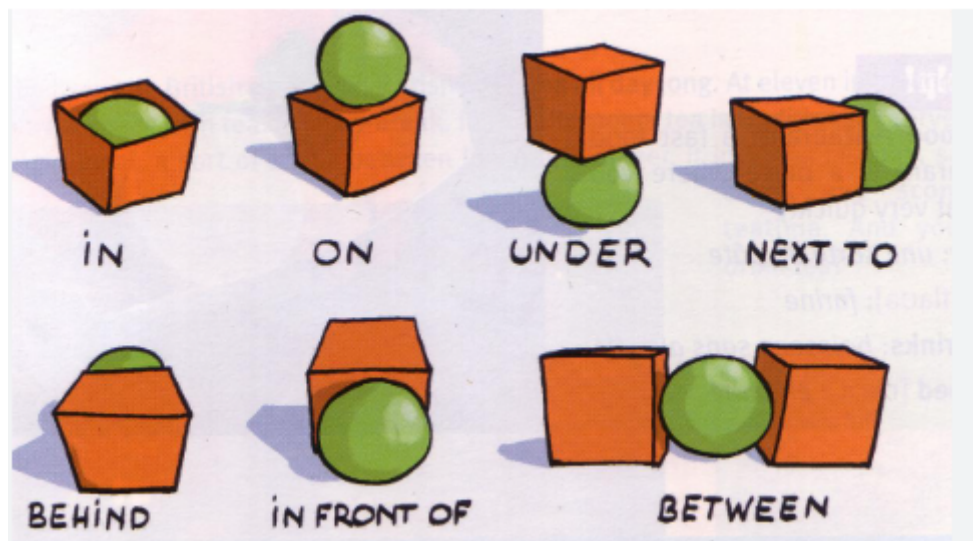


## UNIT 7

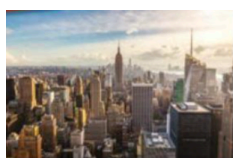
### PRESENT SIMPLE "TO BE"

	AFFIRMATIVE	NEGATIVE	QUESTION
I	was	wasn't	Was I ... ?
he / she / it	was	wasn't	Was he ... ?
we / you / they	were	weren't	Were we ... ?

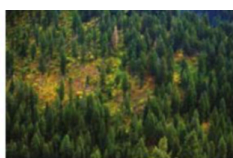
### PREPOSITIONS OF PLACE



### VOCABULARY



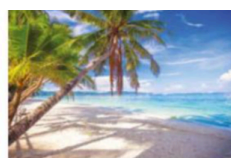
1 city



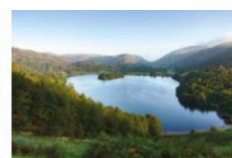
2 forest



3 mountains



4 beach



5 lake



6 countryside



7 zoo



8 skate park



9 playground



10 home

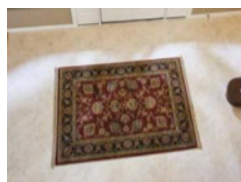
### USEFUL EXPRESSIONS: Where were you yesterday?

Were	you	at	home? the skate park? the playground?	Yes, I was. No, I wasn't.
		in	the city? the countryside? the forest?	

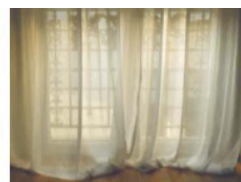
## UNIT 7

### VOCABULARY

in  
on  
under  
in front of  
behind  
next to  
between



1 rug



2 curtains



3 lamp



4 fireplace



5 drawers



6 armchair

## UNIT 8

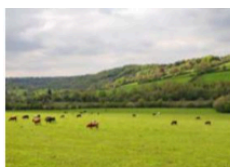
### VOCABULARY



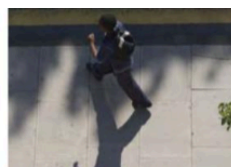
1 wood



2 street



3 field



4 pavement



5 flats



6 shopping centre



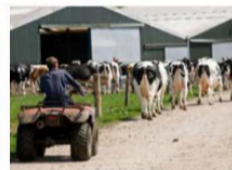
7 gate



8 motorway



9 path



10 farm

### GRAMMAR: THERE WAS / THERE WERE

There	was	a	wood.	shopping centre.	farm.
	wasn't		motorway.	gate.	path.
	were	some	streets.	fields.	pavements.
	weren't	any			flats.